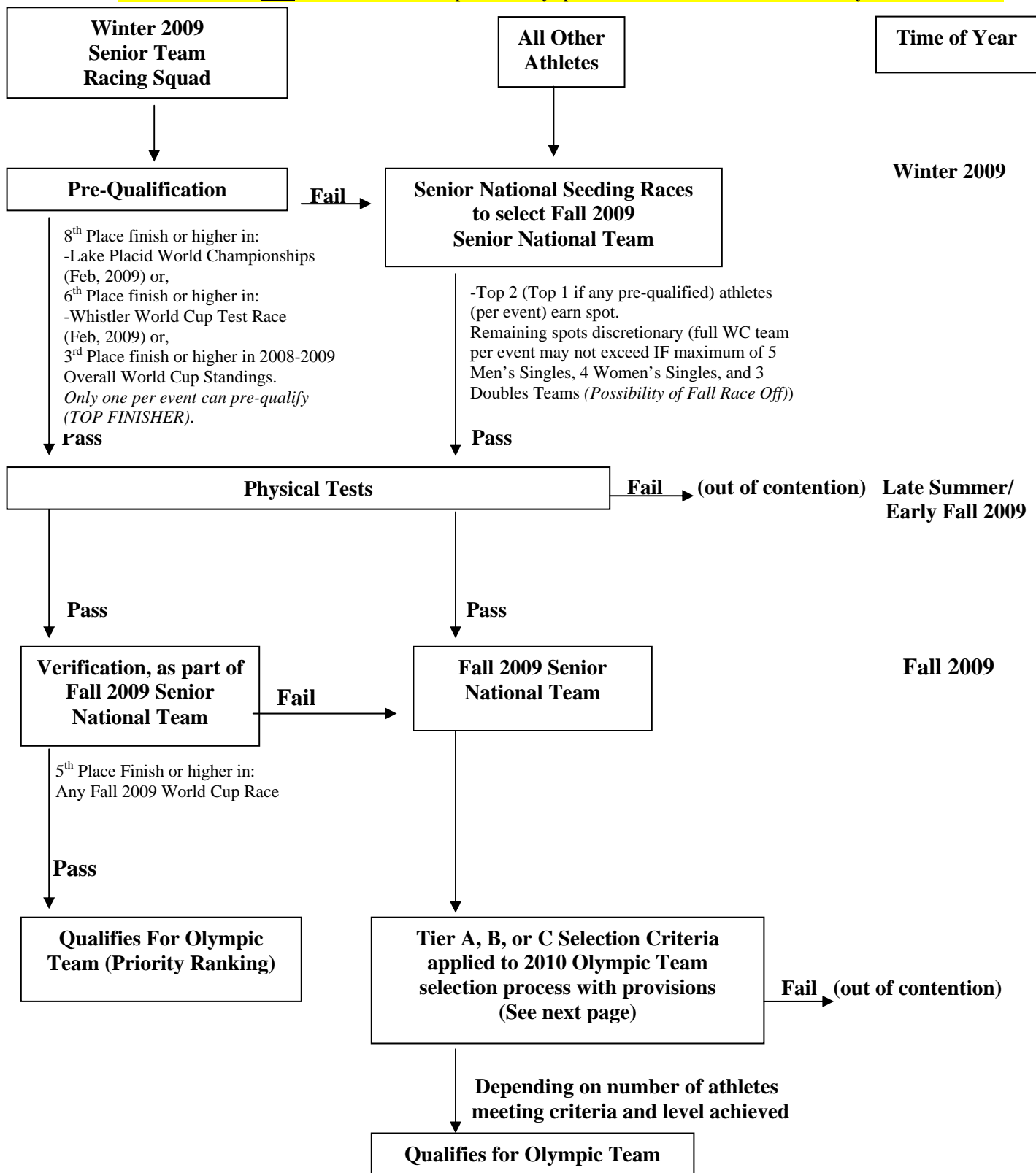


# United States *Luge* Association

## 2010 Winter Olympic Team Selection Process

**\*\*This Flow Chart is NOT a substitute for the complete 2010 Olympic Team Selection Process. Please use it only as a Visual Guide\*\***



**\*\* This flow chart is NOT a substitute for the complete 2010 Olympic Team selection process. Please use only as a visual guide\*\***

**Tier A, B, or C Selection Process**  
**Applied to 2010 Olympic Team Selection Process with Addendum's**

**\*\*This Flow Chart is NOT a substitute for the complete 2010 Olympic Team Selection Process. Please use it only as a Visual Guide \*\***

To remain in the pool of Athletes eligible for selection to the 2010 Olympic Team based on objective standards (and generally based upon the tier system of the World Championship Selection Process), you must achieve a ranking in one of the following tiers in World Cup Races during the Fall 2009 season.

**Tier A**

All Disciplines: One (1) Top 5 finish

**Tier B**

Men: Two (2) Top 11 Finishes

Women: Two (2) Top 9 Finishes

Doubles: Two (2) Top 8 Finishes

**Tier C**

Men: One (1) Top 11 + Two (2) Top 15

Women: One (1) Top 9 + Two (2) Top 12

Doubles: One (1) Top 8 + Two (2) Top 9

NOTE 1: -- each Tier placing threshold listed above is dependent on an adequate size to the field. Please consult the chart in the formal policy document if the size of the field is anything less than 18 sleds in doubles, 24 sleds in women's singles and 30 sleds in men's singles.

NOTE 2: -- the size of the field will be determined by adding together those sleds that begin one run of a World Cup race to those sleds that begin the FIL defined qualifying run for that same World Cup race but do not qualify for that World Cup race.

Priority in filling out the Olympic team will be applied as follows:

- 1) Pre-qualified & Verified Athlete(s) (maximum of one (1) (team) in men's singles, women's singles and doubles)
- 2) Top Tier A Athlete(s) based on a ranking within the Tier
- 3) Balance of Tier A Athletes
- 4) Top Tier B Athlete(s) based on a ranking within the Tier
- 5) Balance of Tier B Athletes
- 6) Top Tier C Athlete(s) based on a ranking within the Tier
- 7) Balance of Tier C Athletes
- 8) Discretion

**DISCRETION:**

Only used if the Olympic Team is not filled out through the above process.

**INJURY:**

If an athlete is injured in the Spring or Fall of 2009, the athlete maintains the last tier ranking he/she/they may have had only if it was an "A" Tier ranking. This tier ranking grants them the opportunity, assuming they are healthy enough, and it's before the deadline of naming the Olympic Team, to race-off against athletes in that same tier for the right to be on the Olympic Team, should that condition arise.